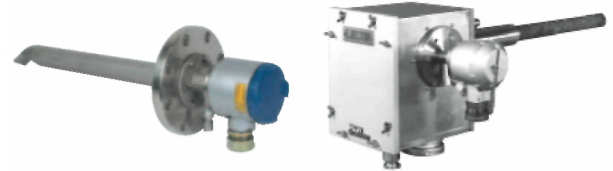


IN-SITU

ZFK8, ZKM, ZTA

()
 (ZFK8),
 /
 (ZKM);



(ZFK8)

(ZTA)



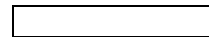
<IP66>



<IP67>
(ZKM)

1.

2.



⋮

3.

0 2 50% ()
 1% O₂)

±0,5%

±2%

6 90% ()

10

:4 ... 20

4.

(500)

0 ... 1

(100)

100 ... 120

: 90 ... 132

200 ... 240

: 190 ... 264

5.

)

: 50/60

240

(

:

200

·

·

)

:

40

·

·

)

70

(

:

50

·

·

)

:

20

·

·

)

(ZFK)

(ZKM)

:
 : -20 ... +600°C
 ()
 : -20 ... +1500°C ()
 -20 ... +800°C ()
 -3 ... +3 (-306 ... +306)
 :
 : JIS5K 65A FF
 (JIS5K-80AFF)
 : 0,3, 0,5, 0,75, 1
 (0,8)
 ():
 : JIS10K 65A RF
 : 1, 0,5, 0,75, 1, 1,5
 ()
 :
 -20 ... +60°C
 -5 ... +100°C
 125°C
 :
 : -30 ... +70°C
 : -10 ... +100°C
 : (/ IEC IP55)
 : (50)
 :
 : SUS316,
 : SUS304 SUS316
 () : SUS316,
 SUS304 ():
 SiC, SUS316, SUS304
 :
 ø 1/4 ø 6
 ()
 Rc1/8 NPT1/8):
 :
 ±45°
 :
 (x) 210 x 100
 () { }:
 : 1,6
 : 15 (1)
 1) : 5
 :
 SUS
 : ()
 5 ... 10 /
 1,5 ... 2 /
 200 ... 300 { 2 ... 3 / 2 }
 :
 () :
 100°C,
 (1a) , 200
 , 2

: 4-
 :
 (1) : 6 , 1a, 250
 /3 30 /3
 (2) :
 •
 • 3)
 •
 •
 • 1)
 • 2)
 1) : 1)
 2) 3) : 1)
 4) 5)
 / 6)
 2)
 2) 3) 4) 1)
 - 5) - ,
 3)
 :
 : 3 ()
 : 0 (10) , : 5
 (2) :
 •
 •
 • ()
 •
 •
 •
 :
 (a)
 (b) ()
 : 00 00
 99 23
 (c)
 :
 •
 : 0,010 ... 25,00% O₂
 :
 0,010 ... 50,00% O₂
 •
 :
 : 0,25 ... 2,0% O₂
 :
 20,6 ... 21,0% O₂
 ()
 :
 : 00 00
 99 59
 : 0 00
 0 999
 :

RS232C (MODBUS),

RS485 (MODBUS)
():

" "

(K R).

-20 ... +55°C

95%

-30 ... +70°C

95%

(IEC IP66 IEC
IP67)

(x x):

170 X 159 X 70 (IP66)

220 X 230 X 95 (IP67)

{ }:
IP66: .2 ()

IP67: .4,5 ()

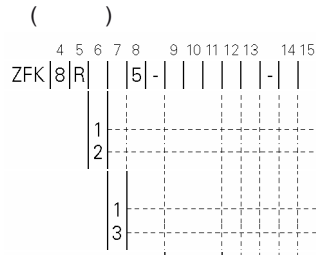
: IP66: :
: :
,1C-F

IP67: 6PB 3.5/10.5
()
: ()

<p>II, I, (IEC1010-1) 10 (SELV)</p>
--

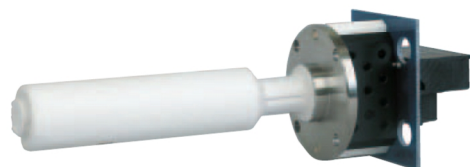
<p>89/336/EEC TZ734575. EN 55011 : 1992 CLASS A EN 50082-1 : 1992 ,ESD FBT</p>
--

ZFK, ZKM



	Ø6 (SUS) Ø1/4 (SUS)	
1	100-120	, 50/60
2	200-240	, 50/60
3		
0Y 0	SUS304	300
5 A 3	SUS304	500
5 A 5	SUS304	750
5 A 7	SUS304	1000
5 A 1	SUS304	1000
5 B 3	SUS316	300
5 B 5	SUS316	500
5 B 7	SUS316	750
5 B 1	SUS316	1000
5 C 3	SUS316	300
5 C 5	SUS316	500
5 C 7	SUS316	750
5 C 1	SUS316	1000
6 D 3	SUS316	300
6 D 5	SUS316	500
6 D 7	SUS316	750
6 D 1	SUS316	1000
6 E 3	SUS316	300
6 E 5	SUS316	500
6 E 7	SUS316	750
6 E 1	SUS316	1000
ZZZ		
Y A		
Y A B	Rc1/8 NPT1/8	
1		()
2		
3		
J E C		

100 ... 120	ZFK8YY15-0Y0YY-0Y
200 ... 240	ZFK8YY35-0Y0YY-0Y



()

1	2	3	4	5	6	7	8	9	10
Z	K	M						1	-
1									
2									
B									
E									
Z									
1									
2									
RS-232C									
RS-485									
Y									
1									
2									
Y									
1									
2									
3									
4									
5									
6									
7									
J									
E									
C									

IP66
IP67

4 ... 20
0 ... 1

RS-232C
RS-485

4)

+

+

+

4)

()

1	2	3	4	5	6	7	8
Z	T	A	1				1
1							
2							
B							
C							
D							
E							
1							
3							
5							

(. +1500°C)
(. +800°C)

[]

500
750
1000
1500

100/115 , 50/60
200/220 , 50/60
230 , 50/60

:
 Viton - 1 ..
 - 2 ..
 (M5 x 16) - 6 ..
 1 .. () -
 1 .. (- 1 ..)
 - 1 .. (- 1 ..)
 :
 - 1 ..
 (250 , 500
 - 2 ..
 250 , 3,15 - 2 ..) ,
 - 1 ..
 - 1 .. M16 - 4 ..
 - 1 ..
 :

()

1	2	3	4	5	6	7	8	9	
Z	R	Z	K	R				1	-
K									
R									
YA									
YB									
YC									
YD									
YE									
YF									
YG									
YH									
YJ									
YK									
YL									
YM									
AA									
BB									
CC									
DD									
0									
1									
2									

ZKM

R-

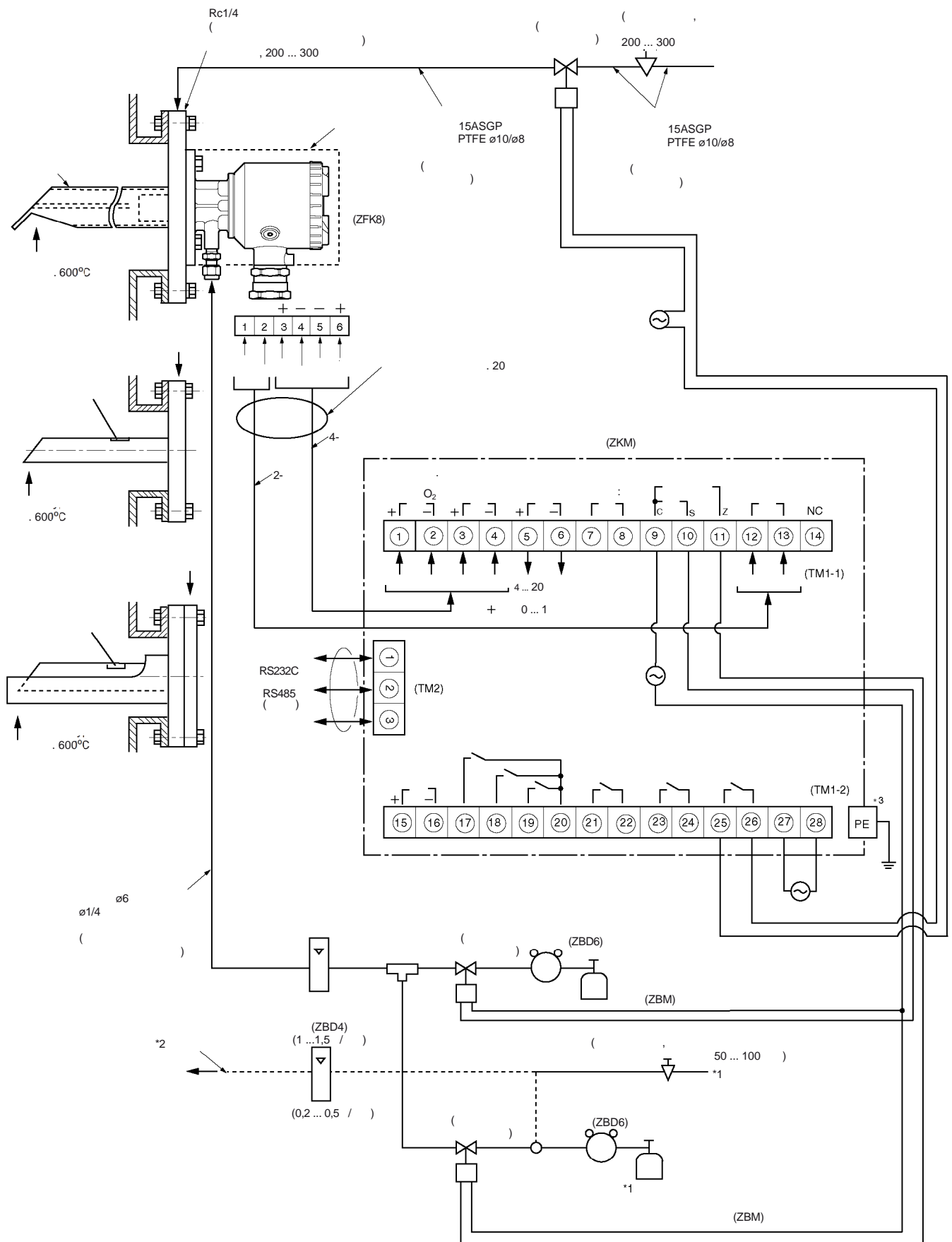
6
10
15
20
30
40
50
60
70
80
90
100

6
10
15
20 } 5 15 20

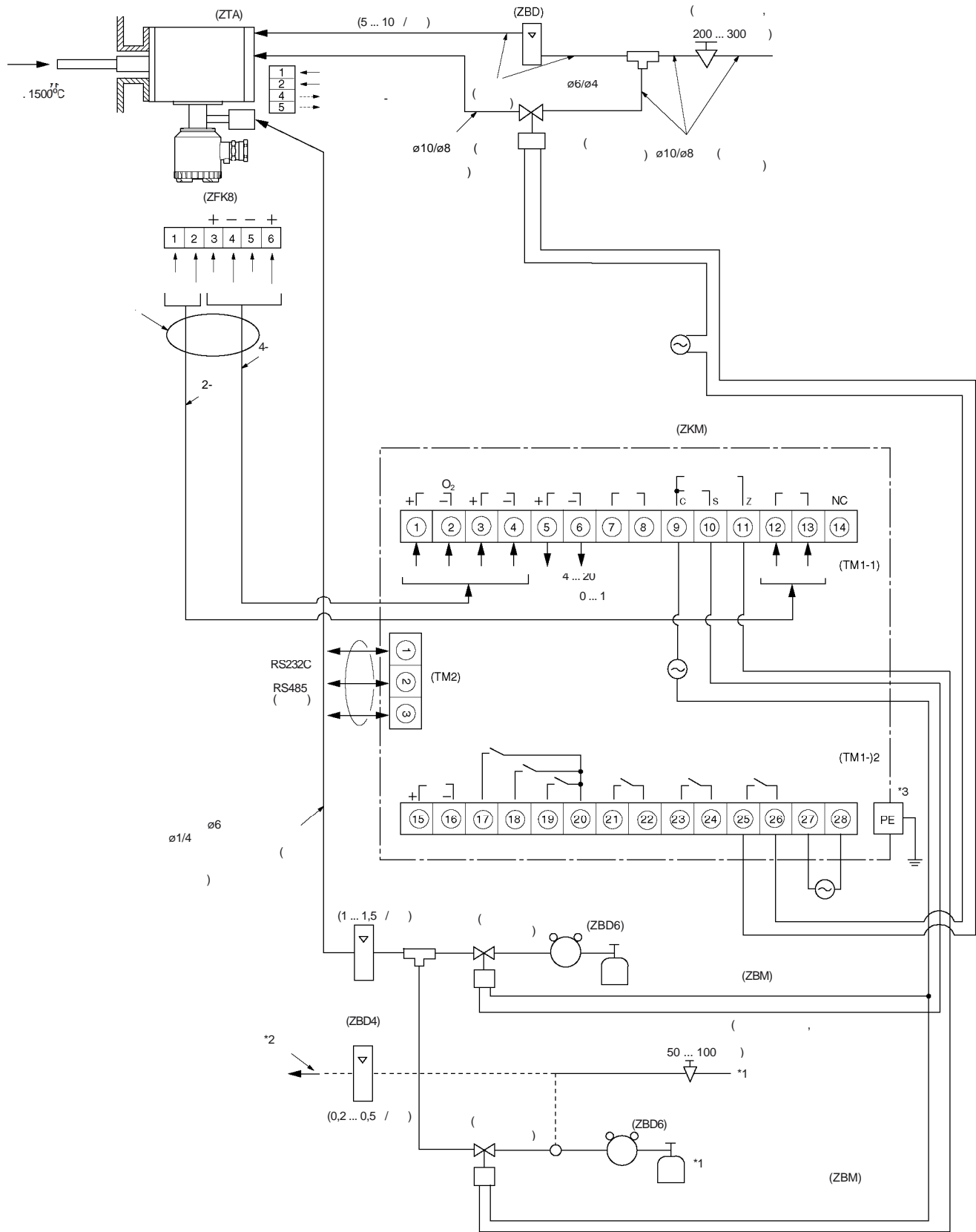
()

5)

(1) ZBML7JNSH4-01 (5% O₂)
 ZBML7JNSJ4-01 (5% O₂)
 (2) ZBD61003)
 (3) ZBD42203, 0,2 ... 2 / ()
 ZBD42403, 1 ... 10 / ()
 !
 • ..), (CO, H₂
 • ..) (Si, , P, Pb
 • ..) +300°C,
 • ..) (+125°C).
 • ..)
 • ..)
 • ..)



- : *1
- : *2
- : *3



*1

*2

*3

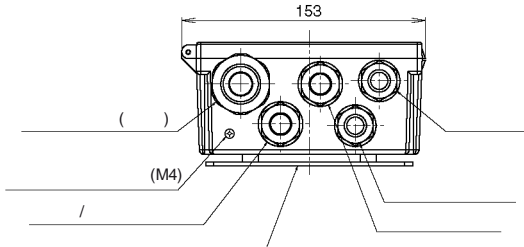
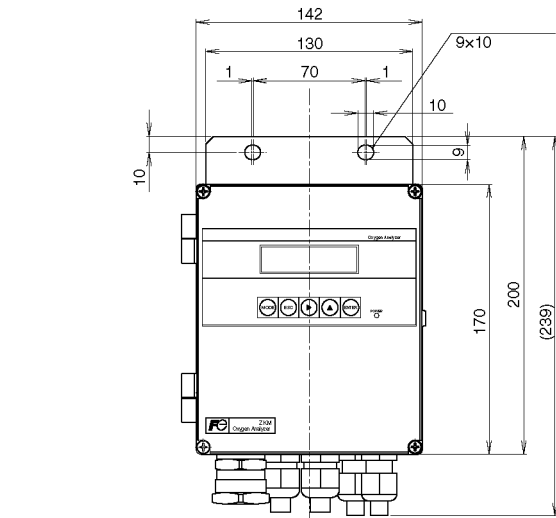
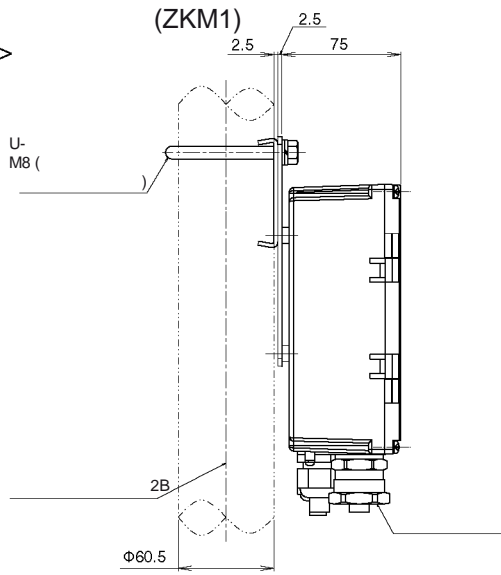
()	600°C	5 ... 20 /	0,2 / ³	—	:	ZFK8R□□5-□A5□□-1□	ZKM	—
			10 / ³	—	:	ZFK8R□□5-□C5□□-1□	ZKM	—
()	600°C	5 ... 20 /	1 / ³	—		ZFK8R□□5-□B5□□-2□	ZKM	—
			10 / ³	—		ZFK8R□□5-□C5□□-2□	ZKM	—
			25 / ³			ZFK8R□□5-□D6□□-2□	ZKM	—
			25 / ³			ZFK8R□□5-□E6□□-2□	ZKM	—
()	800°C	1 /	1 / ³	—	SUS316	ZFK8R□□5-0Y0□□-1□	ZKM	ZTA1
	1590°C	1 /	1 / ³	—	SIC	ZFK8R□□5-0Y0□□-1□	ZKM	ZTA2

(1)

(2)

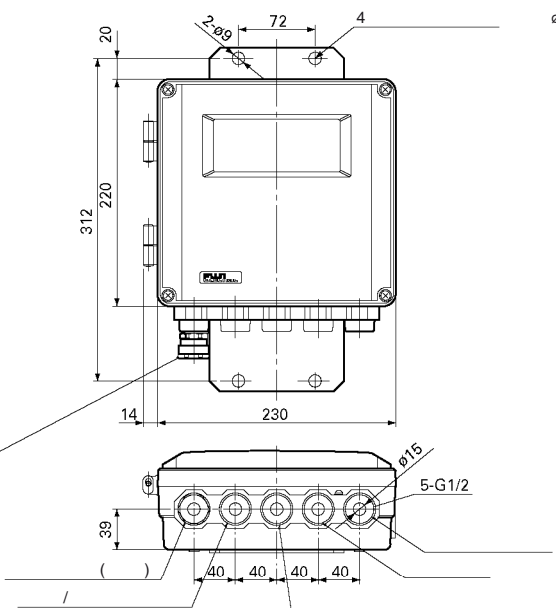
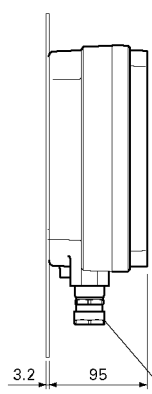
()

<IP66>

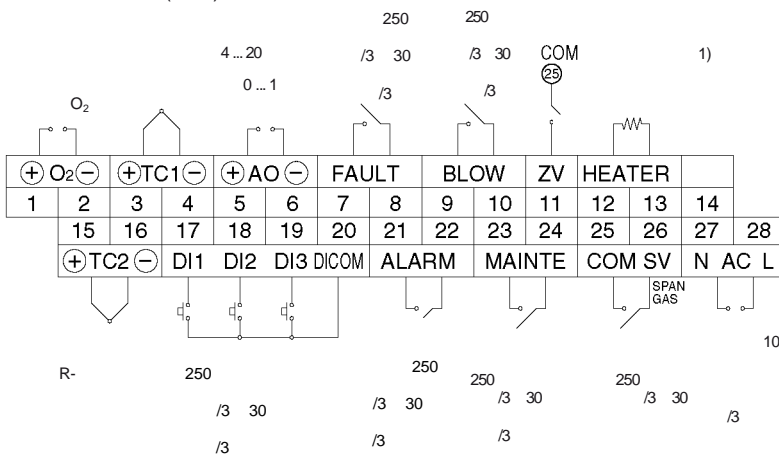


<IP67>

(ZKM2)



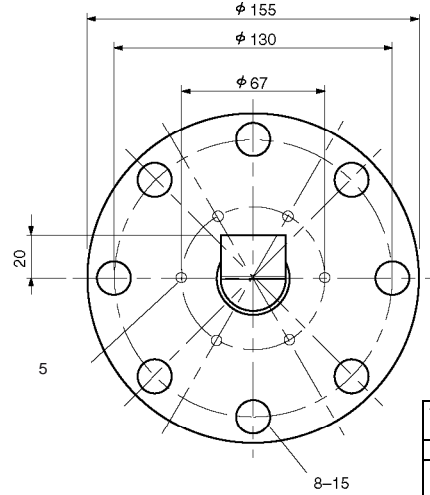
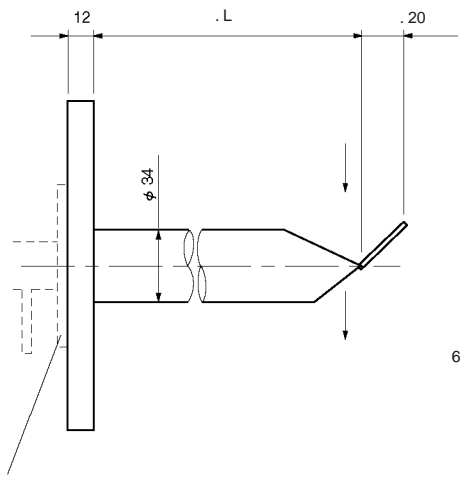
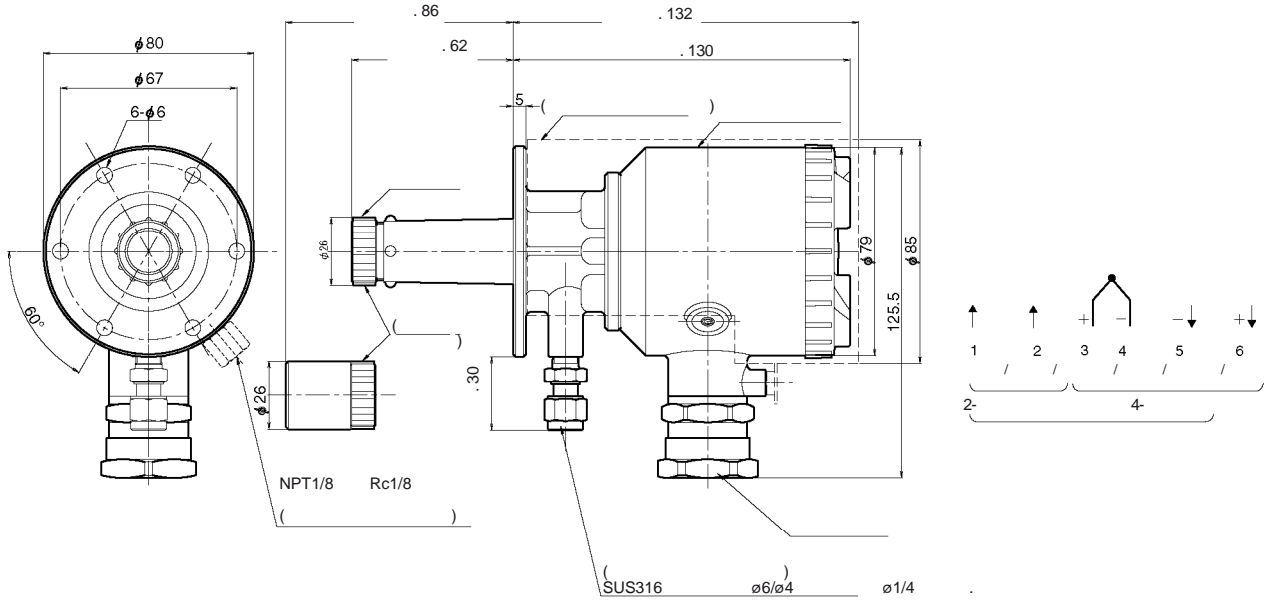
(TM1)



(TM2)

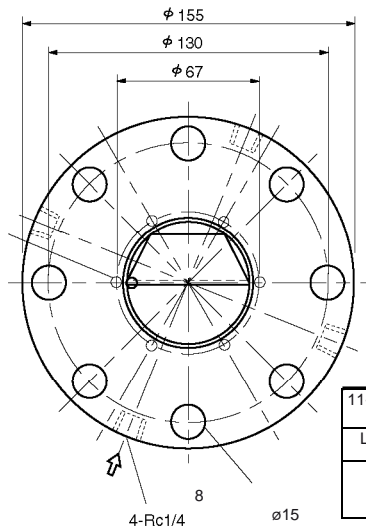
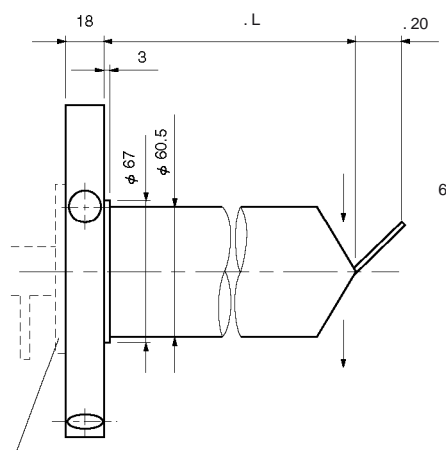
	1	2	3
RS232C	TXD	RXD	GND
RS485	TRX+	TRX-	GND

(ZFK8)



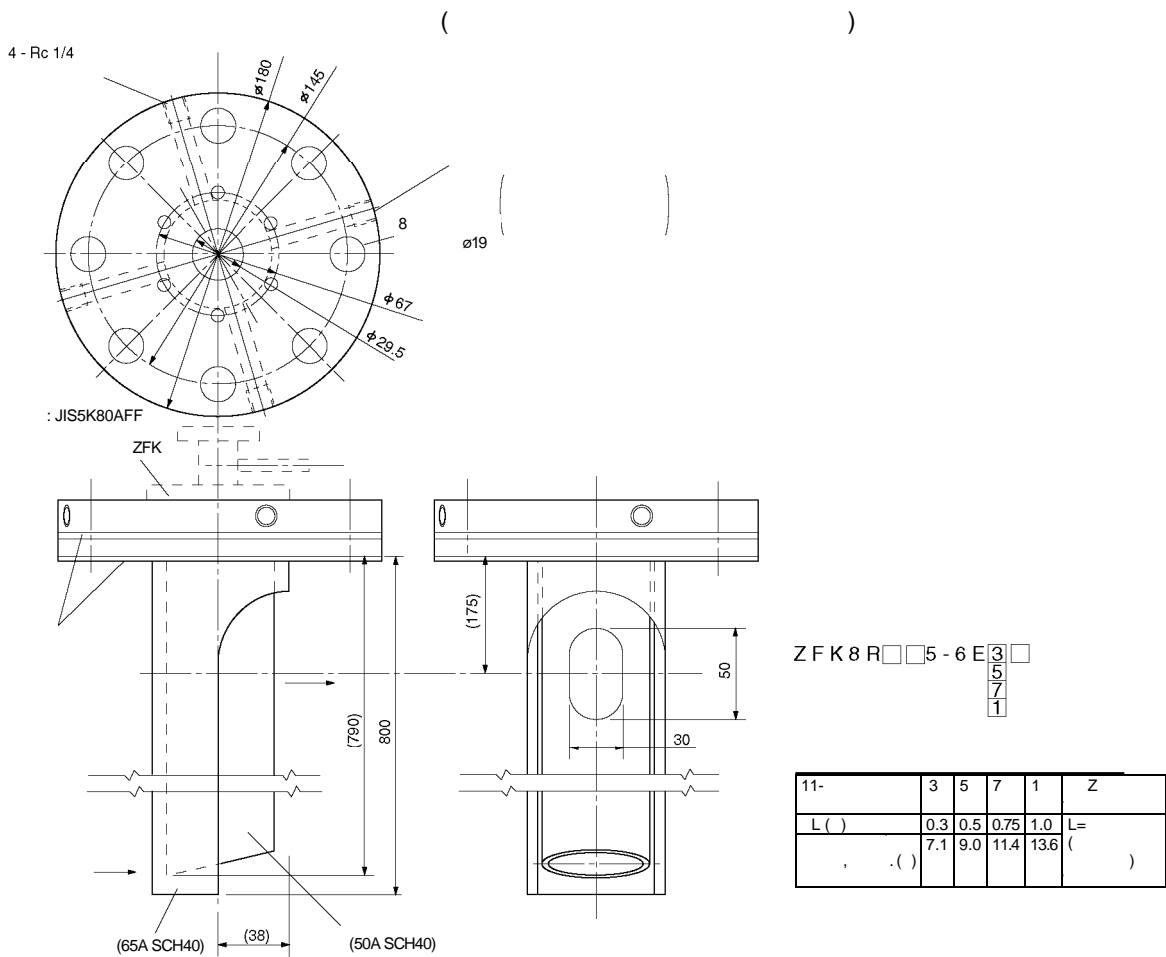
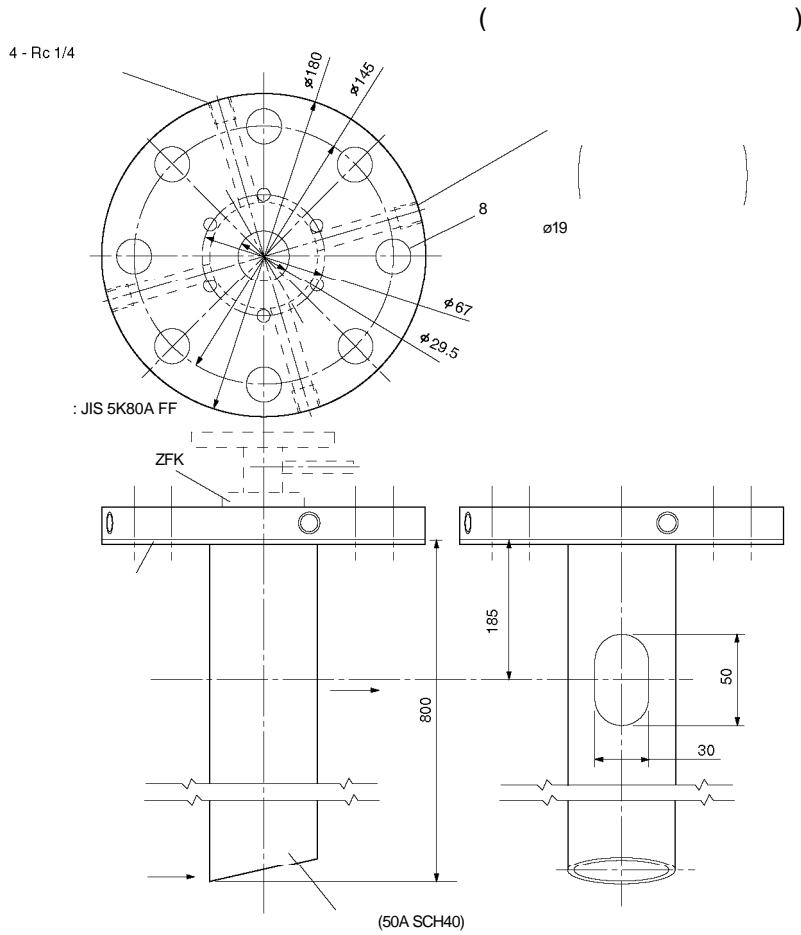
ZFK8R□□5-5A□□
3
5
7
1

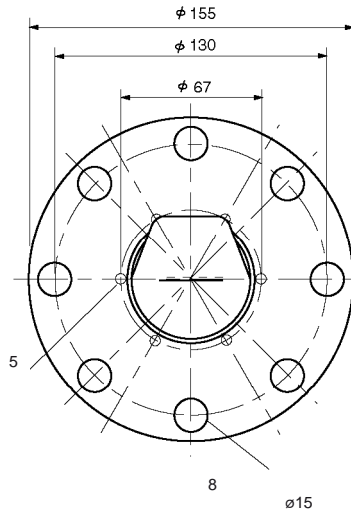
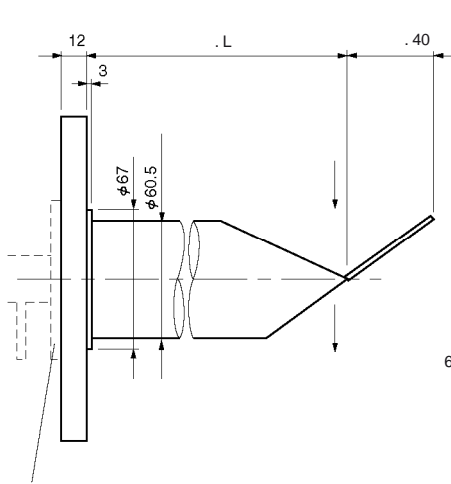
11-	3	5	7	1	Z
L ()	0.3	0.5	0.75	1.0	L=
, ()	2.7	3.3	4.1	4.8	()



ZFK8R□□5-5C□□
3
5
7
1

11-	3	5	7	1	Z
L ()	0.3	0.5	0.75	1.0	L=
, ()	3.0	3.8	4.8	5.7	()

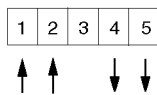
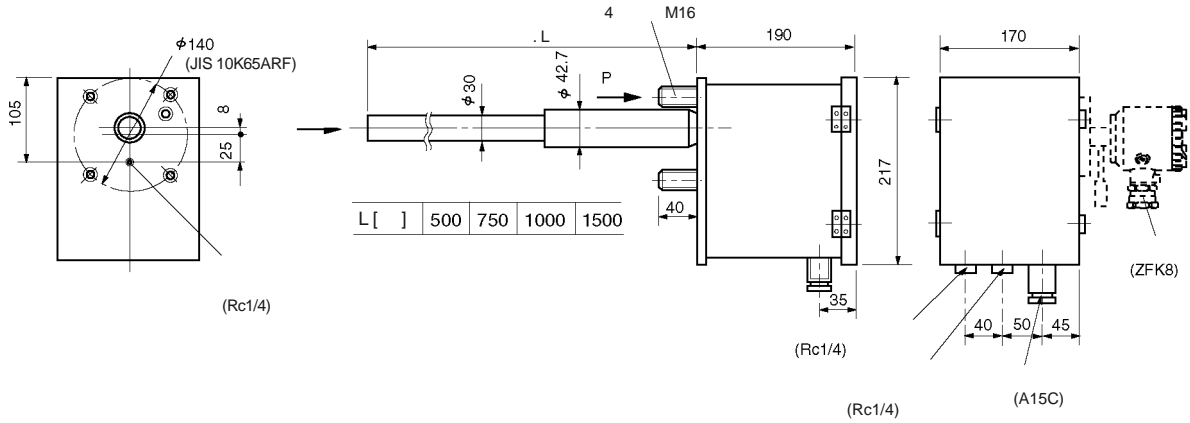




ZFK8R□□5-5B $\begin{matrix} 3 \\ 5 \\ 7 \\ 1 \end{matrix}$ □

11-	3	5	7	1	Z
L ()	0.3	0.5	0.75	1.0	L=
()	3.3	4.5	6.1	7.6	()

(ZTA)





*

Fuji Electric Systems Co., Ltd.

Sales Div. III, International Sales Group

Global Business Group

Gate City Ohsaki, East Tower, 11-2, Osaki 1-chome,
Shinagawa-ku, Tokyo 141-0032, Japan

<http://www.fesys.co.jp/eng>

: 81-3-5435-7280, 7281

: 81-3-5435-7425

<http://www.fic-net.jp/eng>
