

Features:

- ❑ single-phase controlled soft starter ❑
- ❑ all devices for pole-changing motors
- ❑ dual-voltage, for 400V and 230V networks
- ❑ terminal arrangement suitable for switchgear connection
- ❑ for snap-mounting on 35mm standard rail
- ❑ integrated bypass relay
- ❑ no mains neutral conductor (N) required
- ❑ special voltages up to 640V
- ❑ also for single-phase applications
- ❑ degree of protection IP 20 (AC-SAS 3 ... AC-SAS 11)
- ❑ degree of protection IP 00 (AC-SAS 11PUST, 22PUST)



Soft Starters
AC-SAS 3 ... 11
AC-SAS 11PUST, 22PUST
CE

Function:

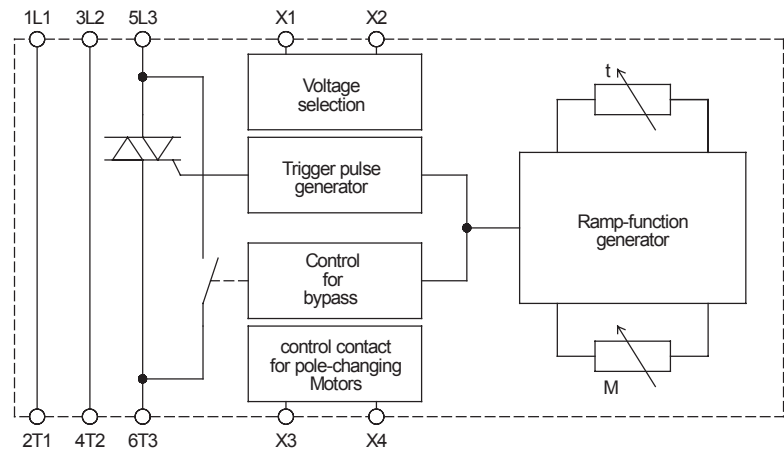
- ❑ soft start
- ❑ 2 separately adjustable parameters starting torque, starting time
- ❑ control contact for pole-changing motors

Typical Applications:

- packaging machinery
- sliding doors
- belt drives
- conveying machinery
- door drives of passenger and goods lifts
- limitation of starting current for transformers

Upon Request:

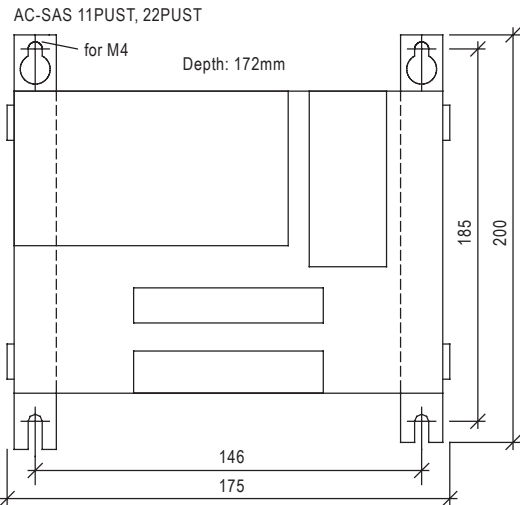
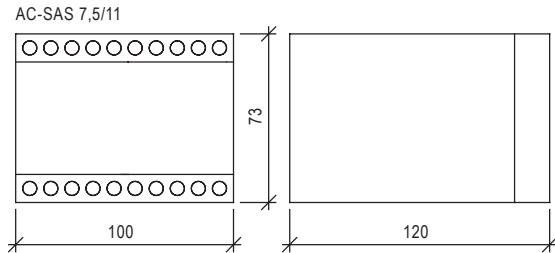
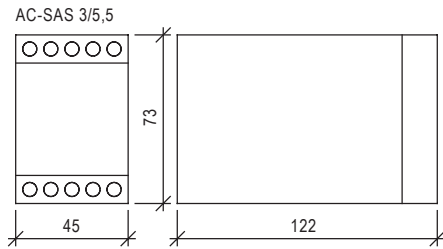
- ❑ potential-free input control voltage 10 ... 30VDC
- ❑ AC-SAS 3 up to AC-SAS 11: standard up to 480V special voltages 500V up to 640V (all types in 100mm-housing)
- ❑ AC-SAS 11PUST and AC-SAS 22PUST: special voltages up to 690V



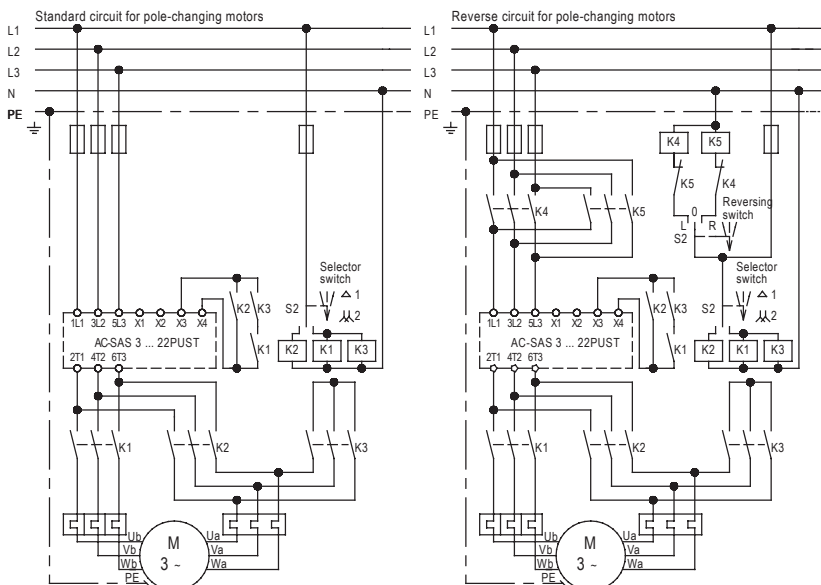
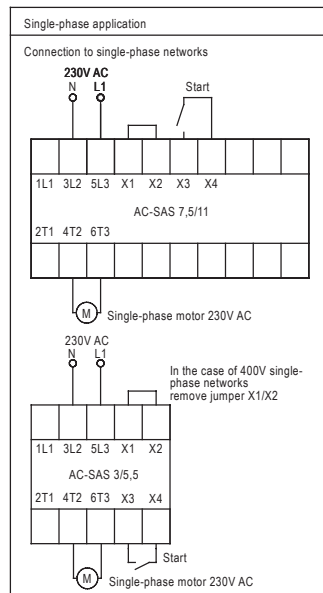
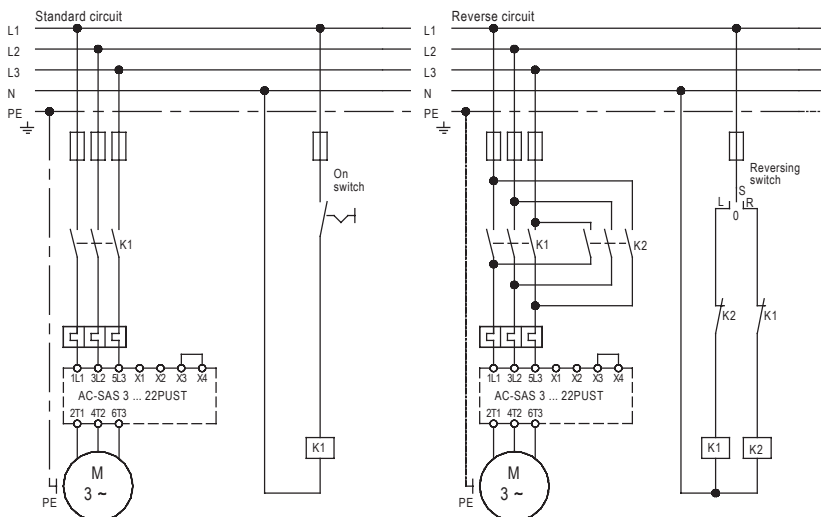
Technical Data	AC-SAS					
	3	5,5	7,5	11	11PUST	22PUST
Mains / Motor voltage X1-X2 jumpered according to DIN EN 50160 (IEC 38)	160 ... 240V ± 10%				400V ±15%	
Mains / Motor voltage X1-X2 not jumpered according to DIN EN 50160 (IEC 38)	380 ... 480V ± 10%					
Device nominal current	6,5A	12A	16A	25A	25A	45A
Mains frequency	50/60Hz					
Motor rating at 230V	1,5kW	3kW	4kW	5,5kW		
Motor rating at 400V	3kW	5,5kW	7,5kW	11kW	11kW	22kW
min. motor current	10% of the device rated current					
Starting torque	0 ... 50%					
Starting time	0,5 ... 5s					
Reset time	200ms					
max. Switching cycle at 3x I _e and 5s t _{an}	240/h	200/h	120/h	70/h	240/h	120/h
max. Cross-sectional area	2,5mm ²				16mm ²	
I ² t-Value Power semiconductor	265A ² s	610A ² s	800A ² s	1250A ² s	5000A ² s	10500A ² s
Ambient / Storage temperature	0°C ... 45°C / -25°C ... 75°C					
Weight / kg	0,3	0,3	0,5	0,5	2,7	3,0
Order number	20700. 40003	20700. 40005	20700. 40007	20700. 40011	20800. 38011	20800. 38022

Please observe supplementary sheet with dimensioning rules.

Dimensions:



Connection Diagrams:



The terminal destination for AC-SAS 11PUST and AC-SAS 22PUST are like following:

- L1 - 1L1
- L2 - 3L2
- L3 - 5L3
- U - 2T1
- V - 4T2
- W - 6T3

EMC

The limit values for emitted interference according to the applicable device standards do not rule out the possibility that receivers and susceptible electronic devices within a radius of 10m are subjected to interference.

If such interference, that is definitely attributable to the operation of the soft starters "AC-SAS", occurs, the emitted interference can be reduced by taking appropriate measures.

Such measures are, e.g.:

- to connect reactors (3mH) or a suitable mains filter in series before the soft starter, or to connect X-capacitors (0,15µF) in parallel to the supply voltage terminals.

By jumpering the contacts X1/X2 divices AC-SAS 3, AC-SAS 5,5, AC-SAS7,5 and AC-SAS 11 can also be used for 220/240V networks. (no at AC-SAS 11PUST and AC-SAS 22PUST).

Subject to change without notice.